



### Tutorial Title:

## ADD ARM/DISARM FUNCTION FOR DOOR SENSORS AND SIREN

### Objective:

Door Sensors should activate the Siren while the system is armed, but not while the system is disarmed (not armed).

### We Will Learn How to:

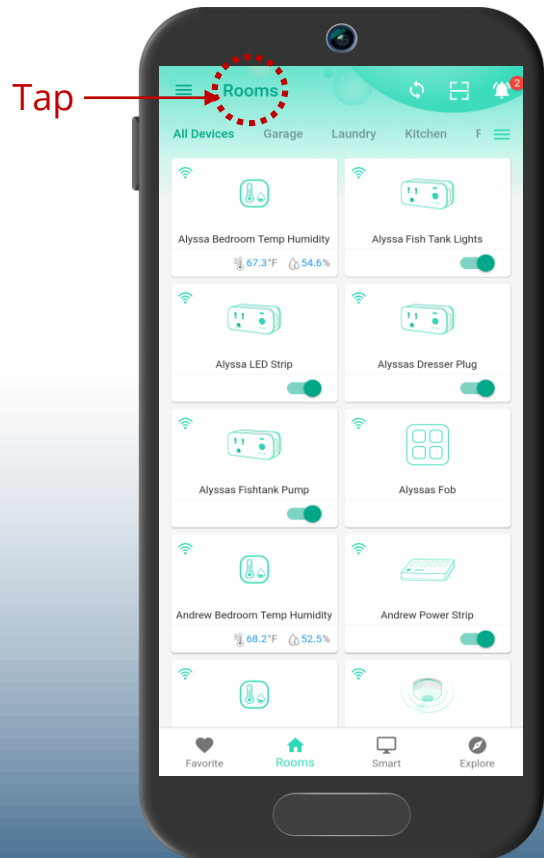
1. Create an Alarm Strategy that will control the activation of the Siren Alarm
2. Create three scenes for this: ARM STAY, ARM AWAY, DISARMED. (Each scene will determine if the Alarm Strategy is enabled or not)
3. Arm or disarm the system as needed, using the app or a smart fob

### Upon Completion, You Will Be Able To:

Arm or disarm the system from the app, so the Siren only activates if a door is opened while the system is armed

1

Open the app, and ensure the **Rooms** screen is shown, similar to this example. (Depending on your settings, your app may open in the Favorite screen).  
Tap the **3 lines** (menu) icon.

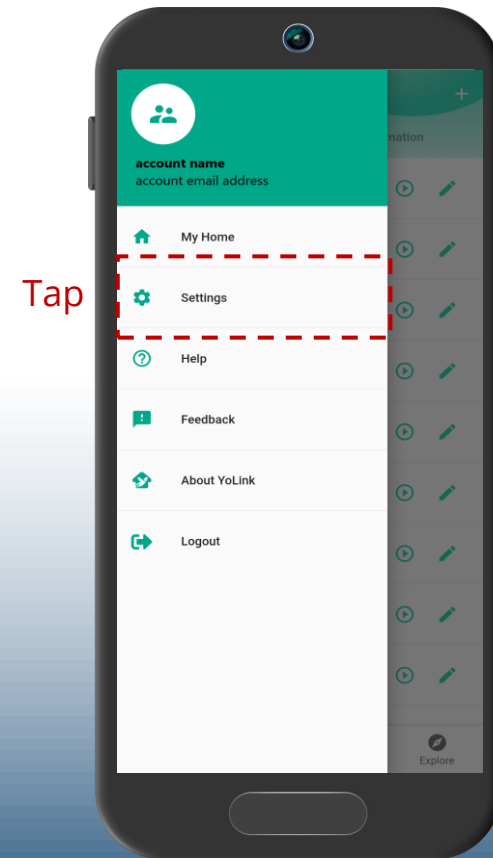


2

This is the Menu main screen. For the automatic activation of the siren, and for notifications (email, text, etc.) we must create an Alarm Strategy  
Tap **Settings**



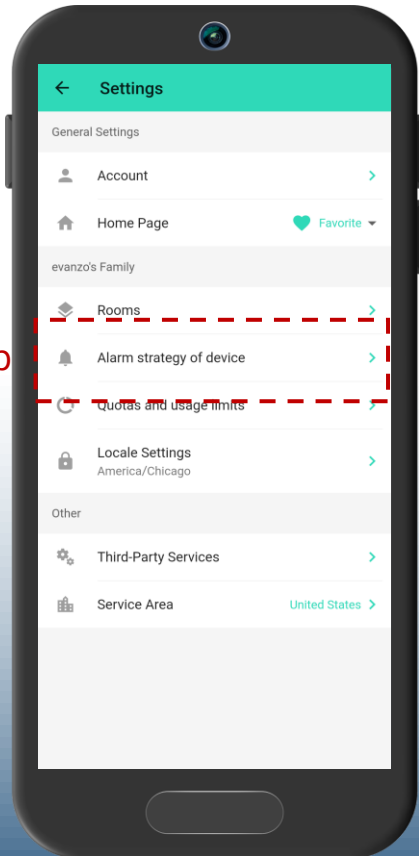
**Alarm Strategy:** A group of user-defined settings, that determine what notifications will be sent, and/or what actions your system may take in the event of a device alert (e.g. turn on siren if water leak is detected)



3

This is the **Settings** screen.  
Tap Alarm strategy of device

Tap



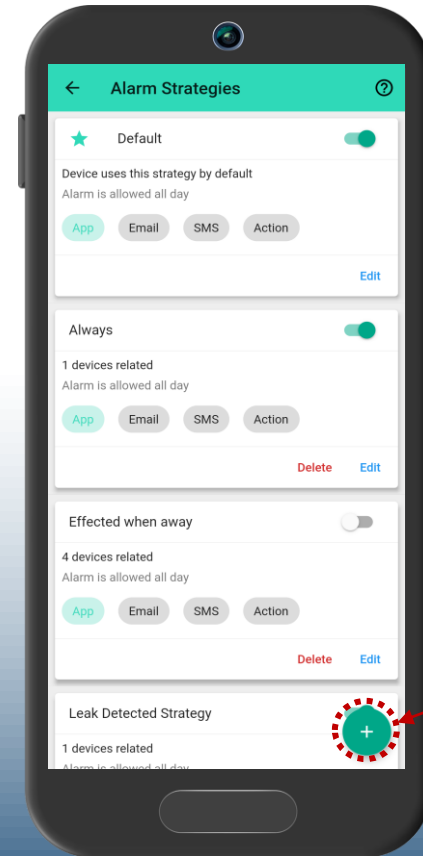
4

Any existing strategies you have are shown here

Tap + to add a new strategy



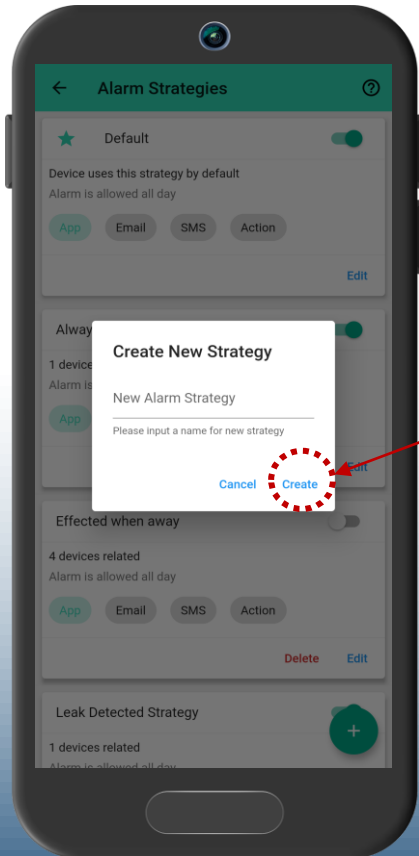
**Note:** some devices, such as fobs, will automatically add scenes to your phone



Tap

5

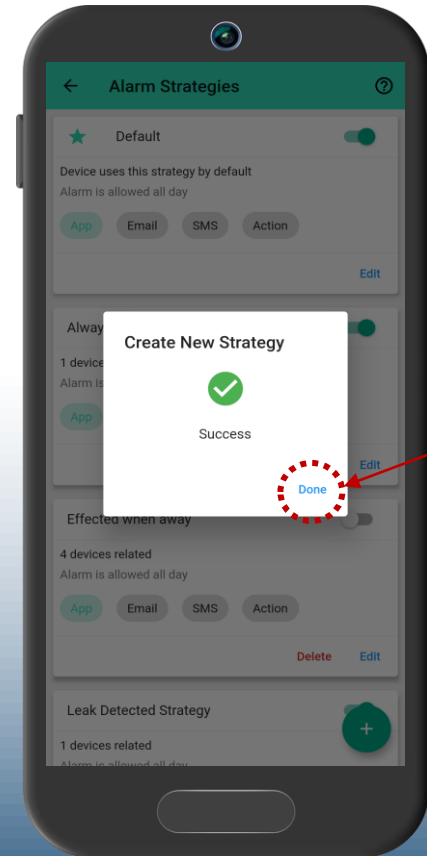
A Create New Strategy pop-up appears. We need to give the strategy a name. Let's call it ARMED. Type ARMED, then **tap Create**.



Tap

6

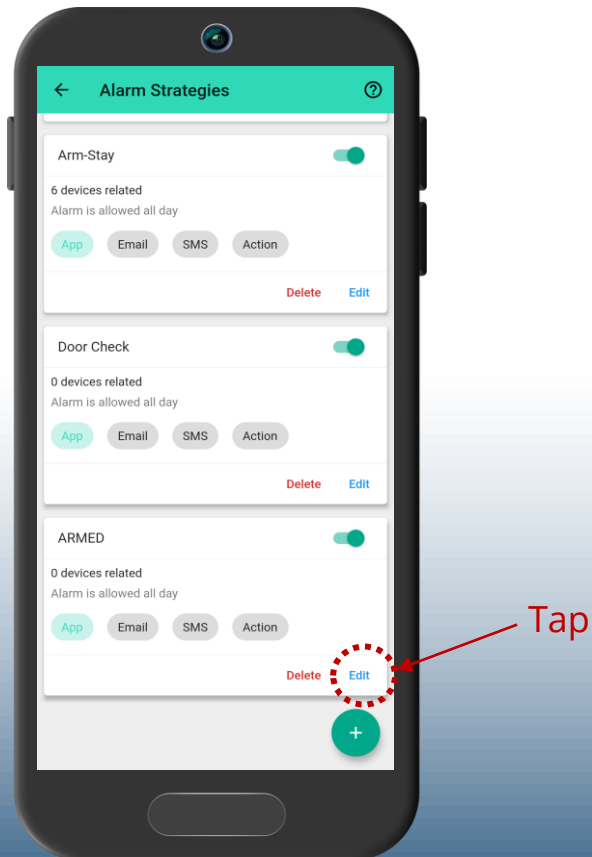
Another pop-up appears, this one confirming the new strategy has been successfully created. **Tap Done**.



Tap

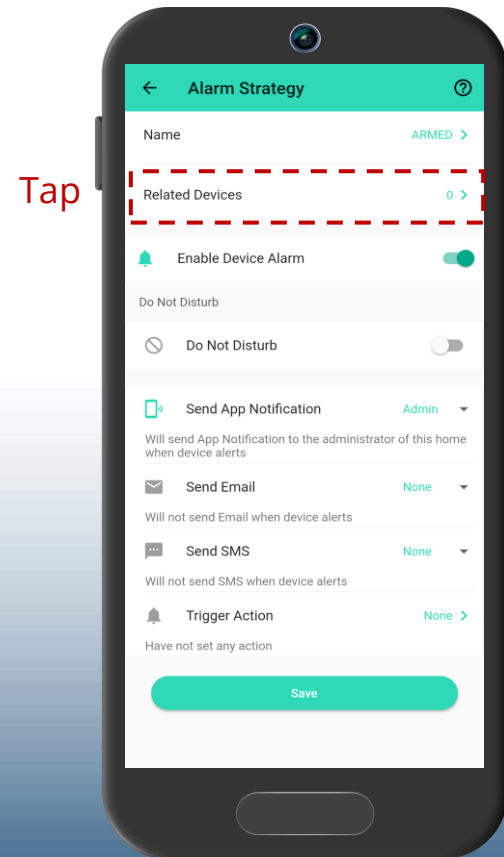
7

We are returned to the **Alarm Strategies** list screen. If you have more than one strategy, identify the one named ARMED. **Tap Edit.**

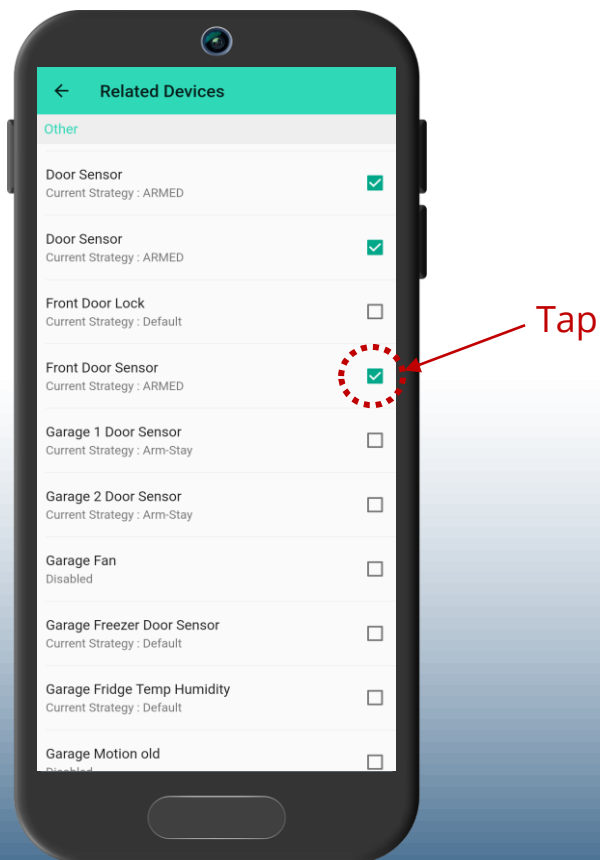


8

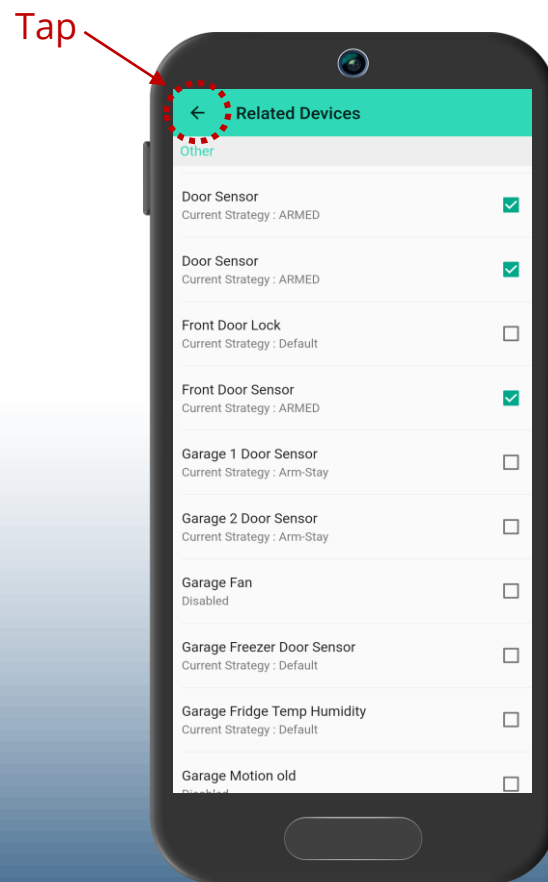
Here is the detail page for our new strategy. After the strategy name, the first available setting is "Related Devices". Related devices are the devices associated with this strategy. In other words, when one of the related devices alerts, this strategy, if enabled, will carry out your preferred notifications and responses (such as turn on a siren). **Tap in this area.**



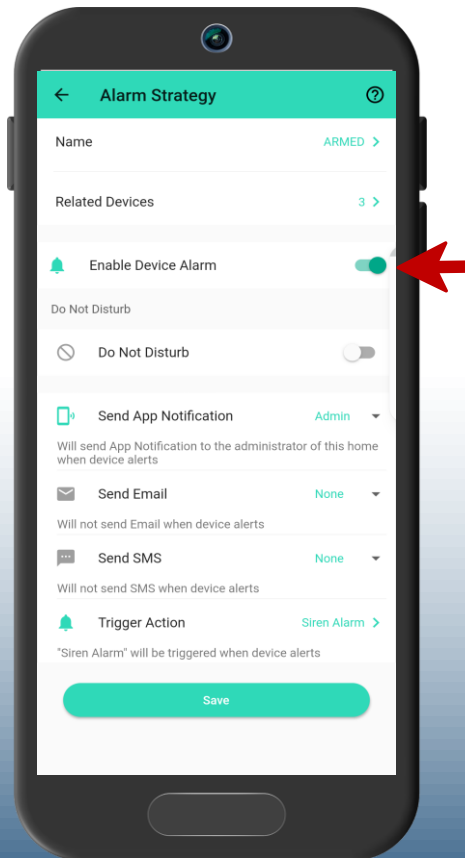
This is the **Related Devices** screen. This is where we will link our new strategy to particular devices in your system. In our example, we have only door sensors, so select the door sensors by tapping the checkbox for each door sensor.



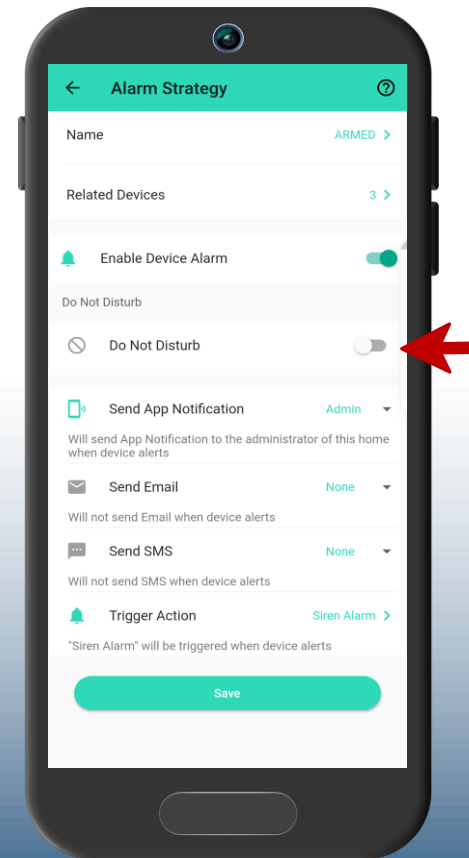
When finished selecting your door sensors, **tap the arrow icon** to exit this screen



We are returned to the alarm strategy details page for our ARMED strategy. The next setting is **Enable Device Alarm**. We will leave it enabled at this time.

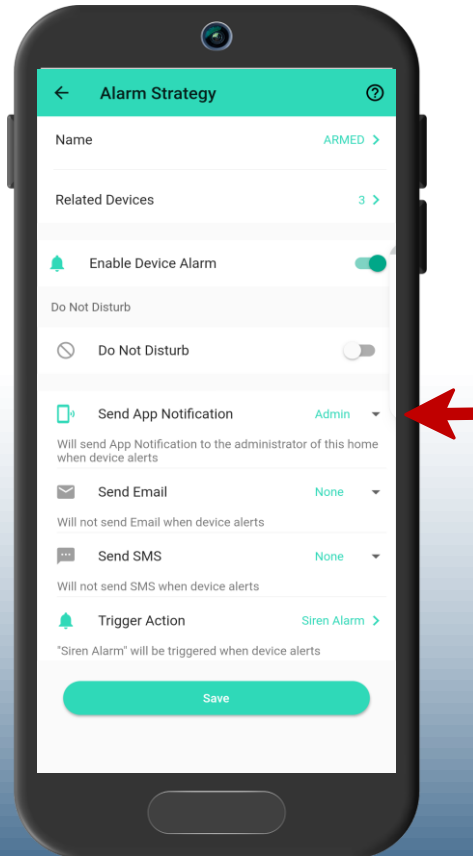


**Do Not Disturb** allows for setting time periods and days of the week where this strategy must not operate. We will leave it off, as shown.



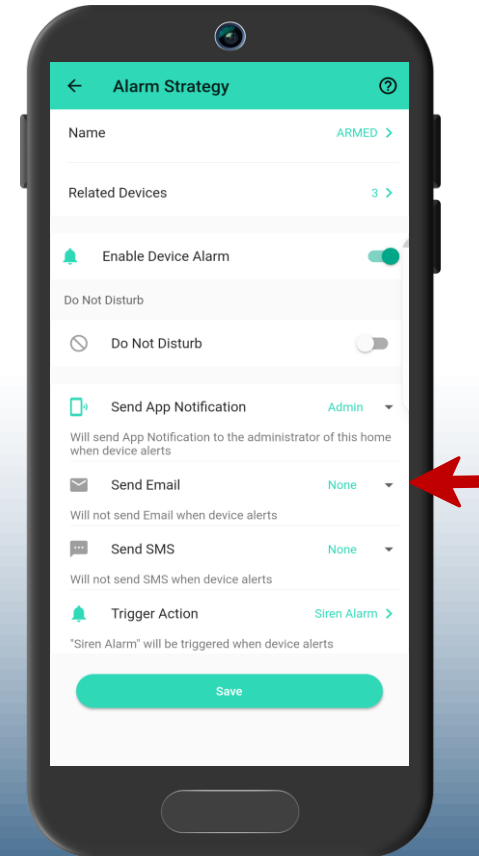
13

**Send App Notification** determines if, and which, phones will receive a push notification when this strategy is activated. Options are All, Admin and None. If you leave it on Admin, only the account administrator (assumedly you) will see notifications on your phone.



14

**Send Email** determines who will receive an email notification when this strategy is activated. Options are also All, Admin and None. We will leave it on None for our example.

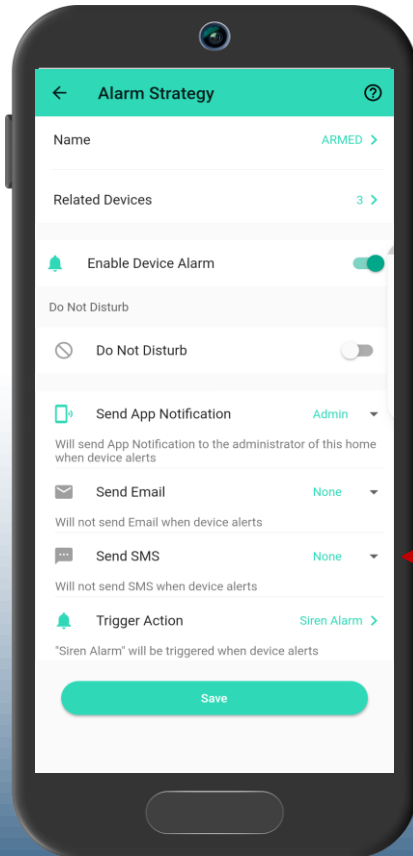




**Send SMS** determines if text messages are sent when this strategy activates. Options are Admin or None (not also "All").

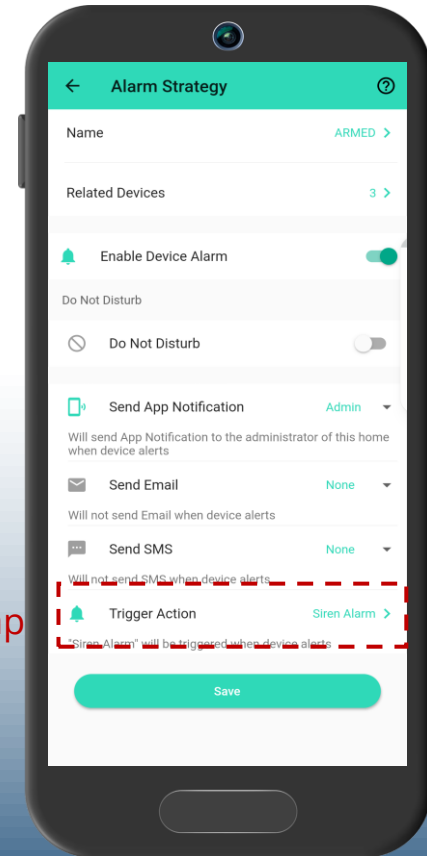


**Note:** Your account has a limited number of free SMS messages sent each month, based on the number of devices you have. Carrier charges may apply. In the app, go to Settings, Quotas and usage limits, to increase your limit, starting at \$1.99 per month



**Trigger Action** is where we can activate our sirens and SpeakerHubs, as well as trigger scenes.

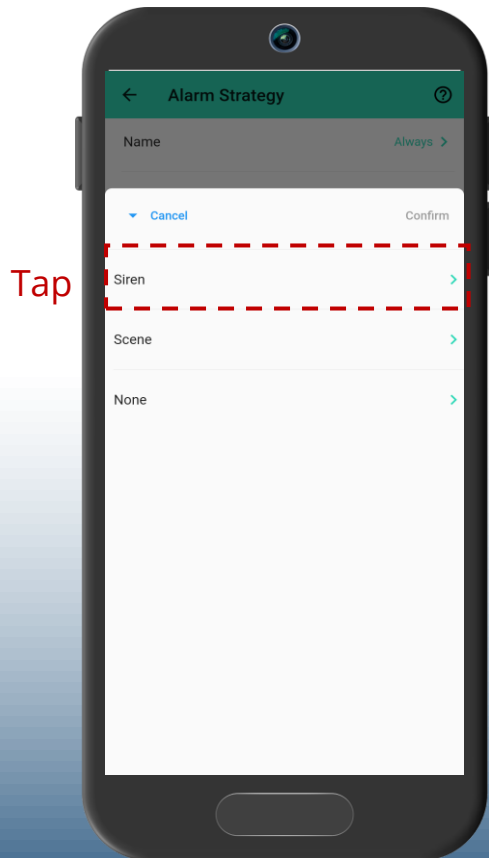
Tap in this area to view and edit the Trigger Actions



17

The available triggers for this strategy are:  
**Siren** – activate one or more Sirens  
**SpeakerHub** (if applicable) – play tones/sounds, send text-to-speech message via the SpeakerHub's speaker  
**Scene** – activate a scene (e.g. close water valves)  
 Or **None**

Tap in this area to modify Siren settings

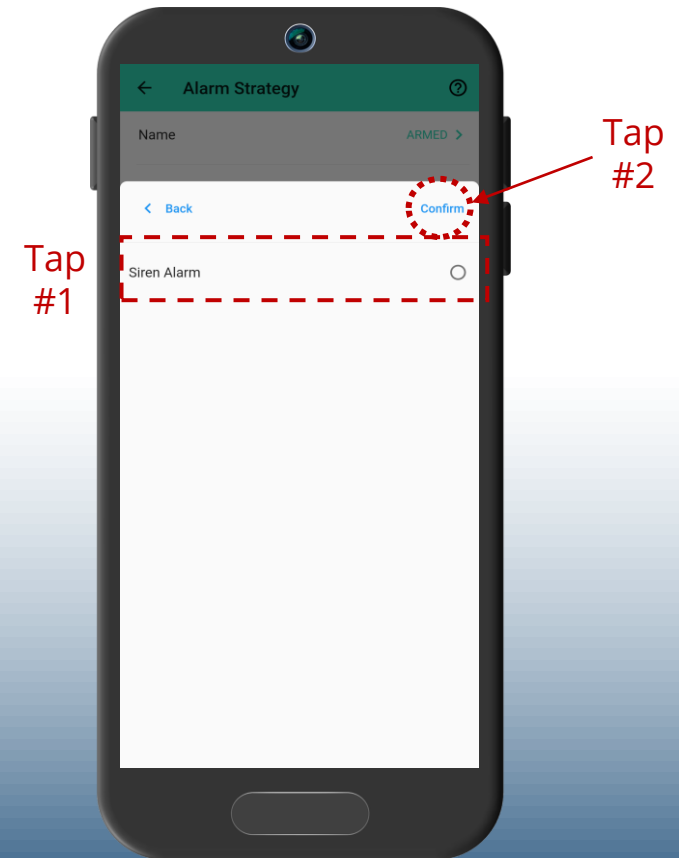


18

The Siren Alarm button is empty, indicating it is not selected.

Tap in this area to select Siren Alarm.

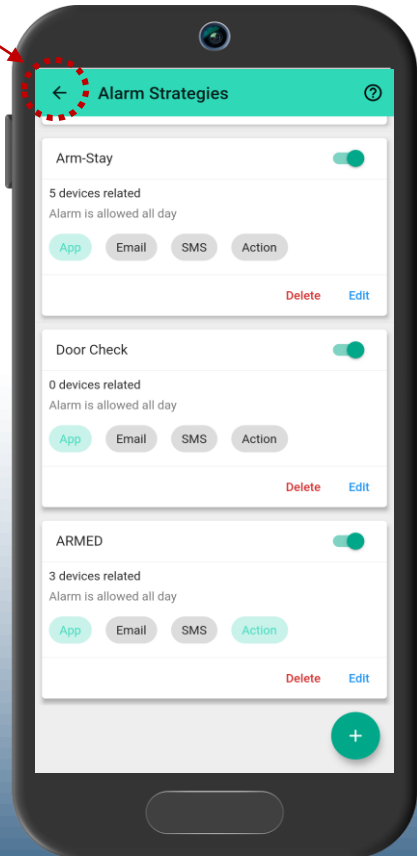
Tap Confirm to save your settings.



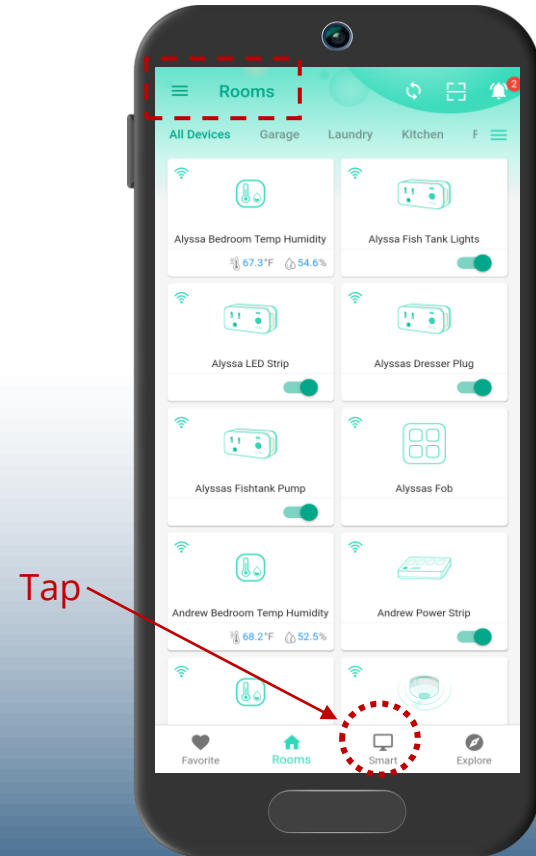
Our new strategy is now visible. From this screen we can confirm it is enabled, three devices are related to it, and Do Not Disturb is off (“Alarm is allowed all day”)

Tap the arrow icon twice, to return to either the Rooms or Favorites screen

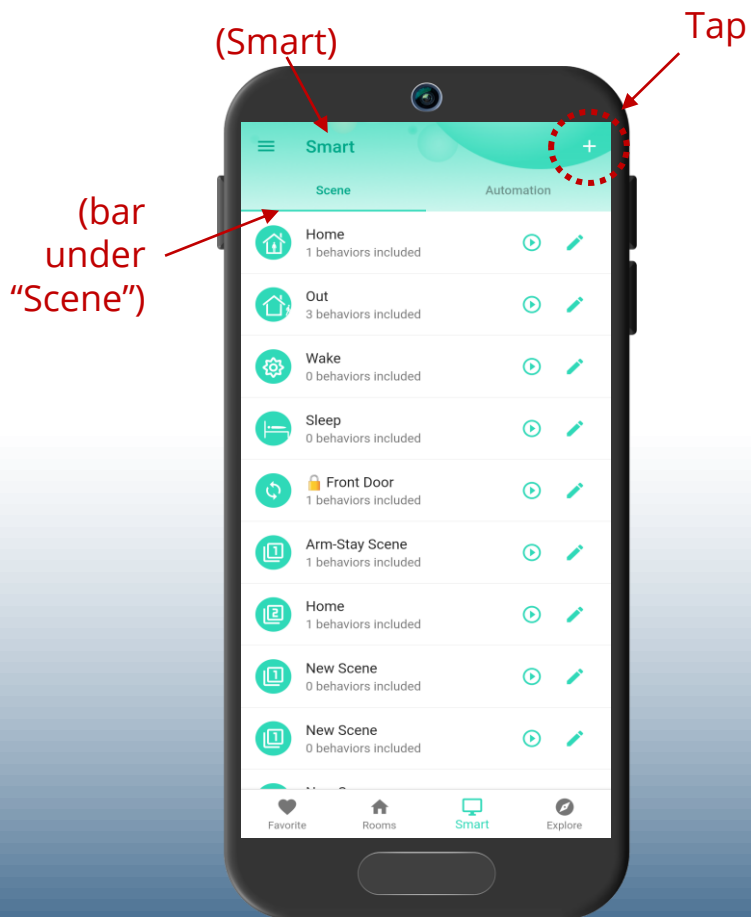
Tap  
(2X)



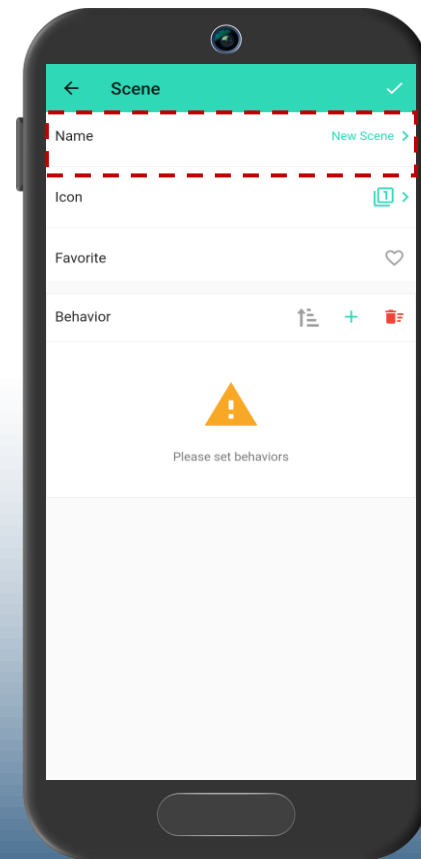
Tap Smart.



This is the **Smart** screen.  
 Scene should be selected already (with a bar under the word Scene).  
 If not, tap Scene.  
 Create the first of three new scenes.  
 Tap + (to add a scene)



This is the new **Scene** screen, ready for you to customize.  
 Let's give it a name.  
 Tap anywhere in this Name area

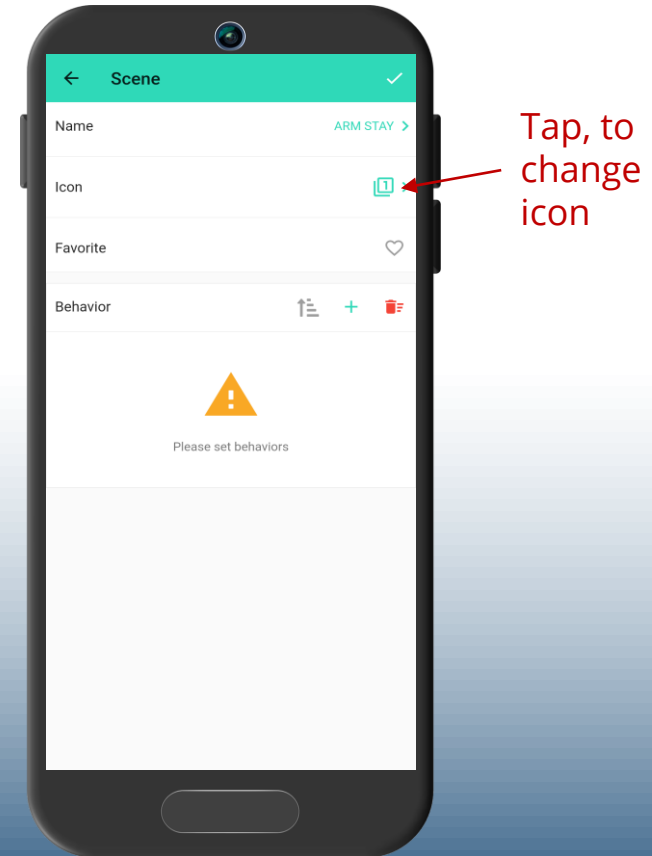


We'll name the first scene ARM-STAY. This will be used when we want the system armed but we will be staying at home. Type ARM-STAY in the name field, then tap **Save**

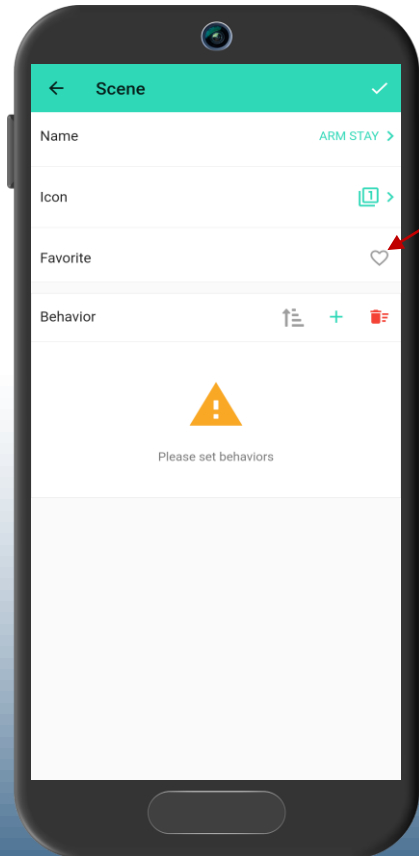


Here is the scene, with our new name shown

Next, optionally, you can assign an icon to this scene. This icon will be displayed at the top of the Favorites screen. Tap the icon area and assign an icon, if desired.



If for some reason you do not want the screen displayed on the Favorite screen, make sure this heart icon is not selected.

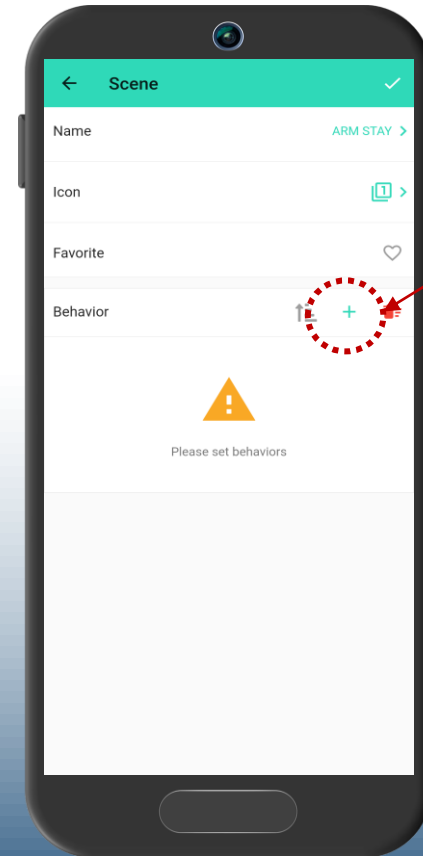


Tap, to mark as favorite scene

Tap + to add a new Behavior

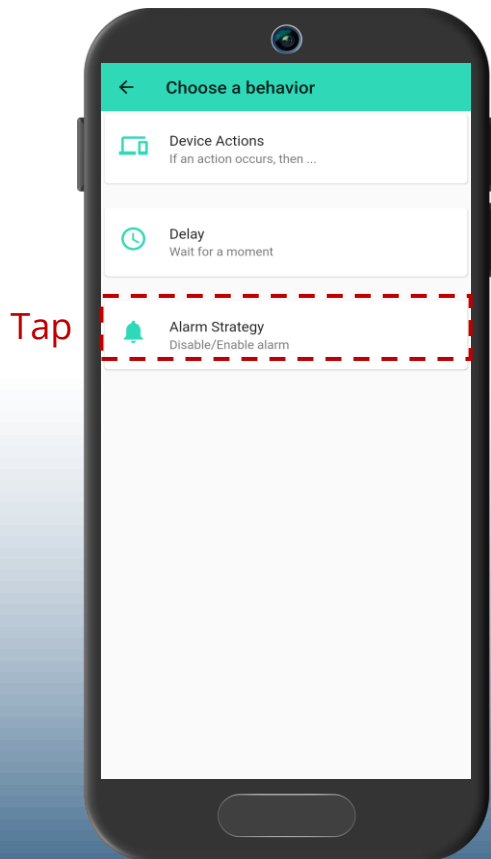


A behavior is what we want to happen when a scene or automation is activated. We can have one or more behaviors, for example: lock front door, turn on porch light, enable "Armed" strategy

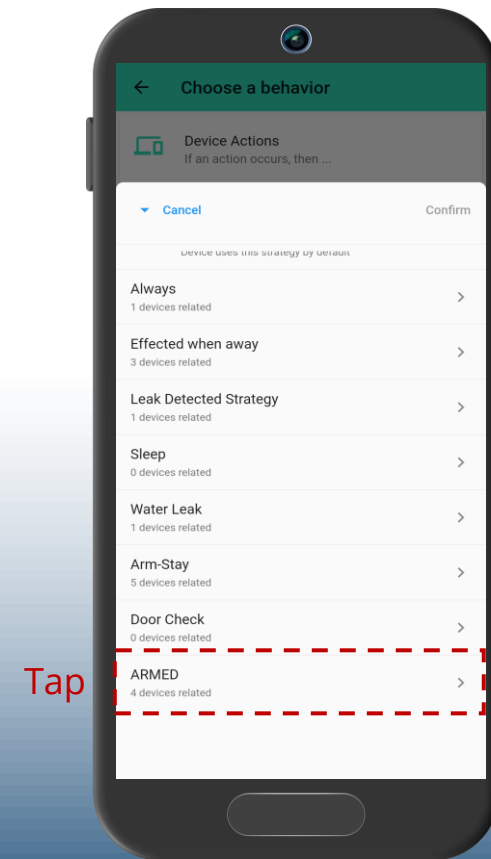


Tap

The **Choose a behavior** screen appears. In this screen we can control a device, add a delay, or enable or disable an Alarm Strategy. Tap anywhere in this area, to open the Alarm Strategy option

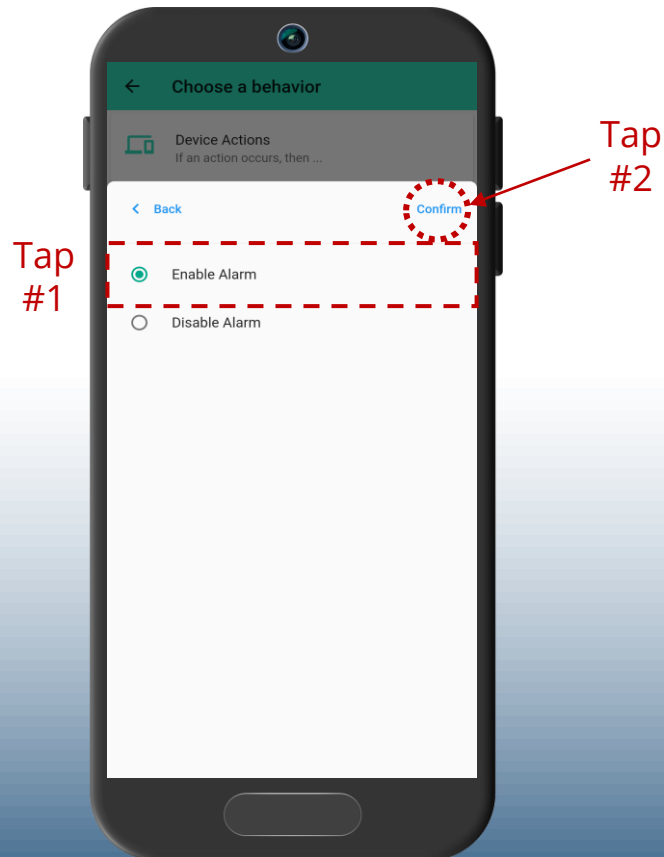


A list of your alarm strategies is displayed. Find the strategy we created, "ARMED" and tap it

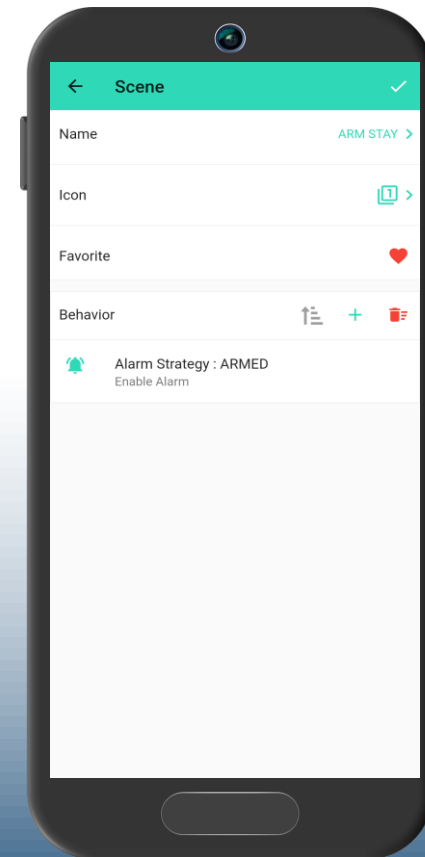


We want to enable this strategy; we want the system armed when the ARM STAY scene is activated

Tap **Enable Alarm**, then tap **Confirm**



We can now review our new scene. The most important part is that the behavior enables the ARMED strategy.

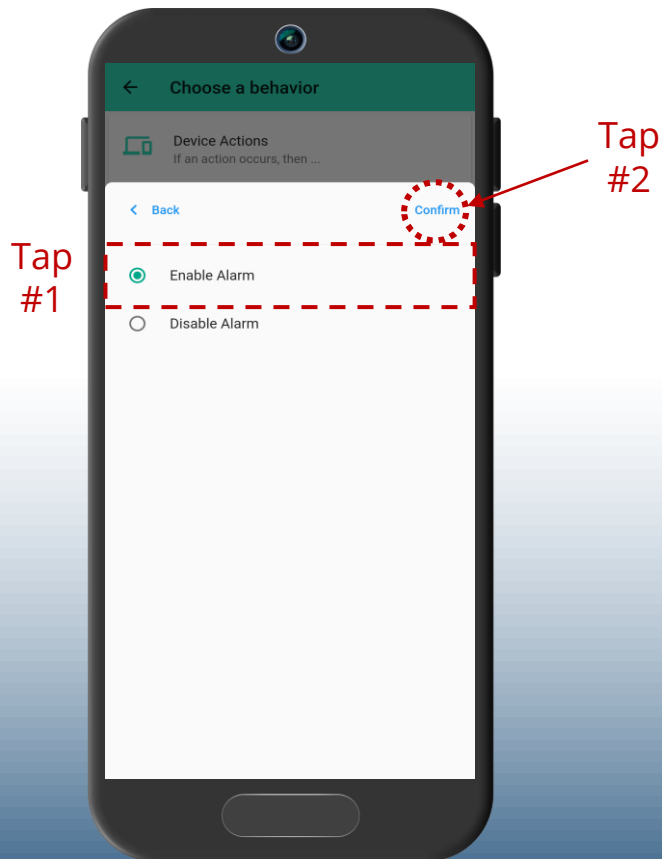




31

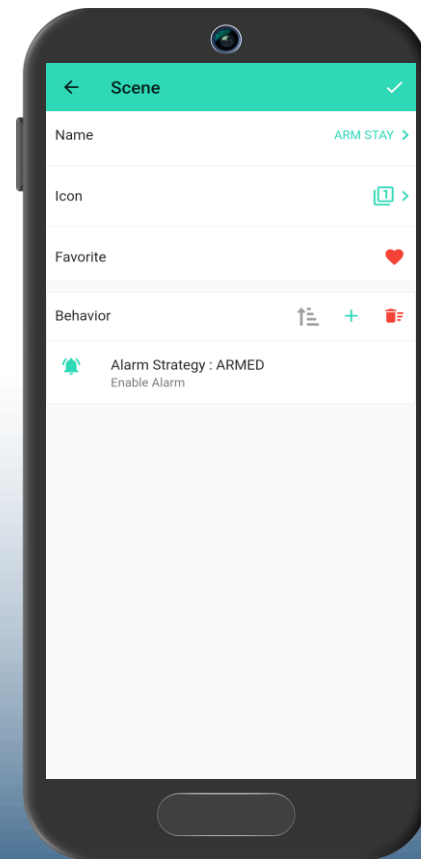
We want to enable this strategy; we want the system armed when the ARM STAY scene is activated

Tap **Enable Alarm**, then tap **Confirm**



32

We can now review our new scene. The most important part is that the behavior enables the ARMED strategy.



You can now create a scene and label it ARM AWAY. Have this scene enable the ARMED strategy. This scene may be identical to your ARM STAY scene, but you might modify this one, to turn on select lights, to make your home appear occupied.



If you have, or later add, indoor motion or vibration sensors, you can create a ARMED type strategy for them (only), and add enabling this new strategy to your scene for ARM AWAY. Only when armed Away will the indoor sensors activate the siren(s).

Finally, you will need to create a scene for disarming the system. Simply create a new scene, label it DISARMED, and have it disable the ARMED strategy.

Now, when you activate the ARM AWAY or ARM STAY scenes, the system will be armed. Meaning, if a door sensor detects a door opening while the ARMED strategy is enabled, the Siren will activate.

Otherwise, if a door is opened after the DISARMED scene was activated, only app notifications are sent (to the Admin); no Siren will sound.

For maximum convenience, and to get the most out of your YoLink system, consider one of our smart fobs!



### AlarmFob

Pre-configured for intrusion/security applications and ready for VirtuAlarm central station monitoring, the AlarmFob makes day to day arming and disarming easy



### FlexFob

Ready to be customized by you, each button can be assigned two functions, including scene activation, control of YoLink devices and triggering Alexa routines and IFTTT applets!

Find them at [shop.YoSmart.com](http://shop.YoSmart.com)

# Thank you!

For additional tutorials, and instructional materials,  
please visit our website: [www.yosmart.com](http://www.yosmart.com)

and our YouTube channel:

[www.youtube.com/c/YoLinkbyYoSmart](http://www.youtube.com/c/YoLinkbyYoSmart)

(and be sure to visit YoLink Academy!)

For additional support and customer service, please email us at  
[service@yosmart.com](mailto:service@yosmart.com)

# YOLINK

You Are Smart!