

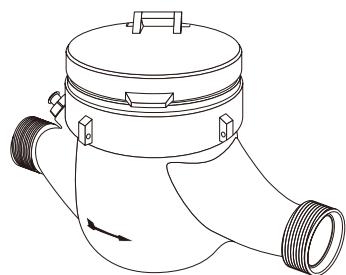
Water Meter

MJS-SDC Series

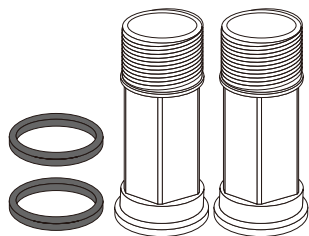
Quick Start Guide

Revision Oct. 08, 2023

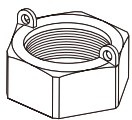
A In the Box



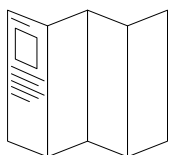
Water Meter



Rubber Gasket (2) & Spud Coupling (2)

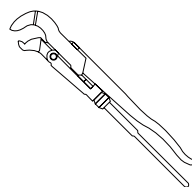


Nut (2)

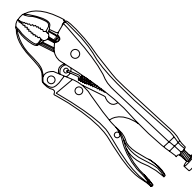


Quick Start Guide

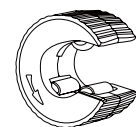
B Required Items



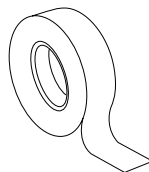
Pipe Wrench



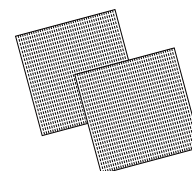
Locking Pliers



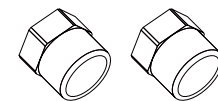
Copper Pipe Cutting Tool



Teflon/Thread Sealing Tape

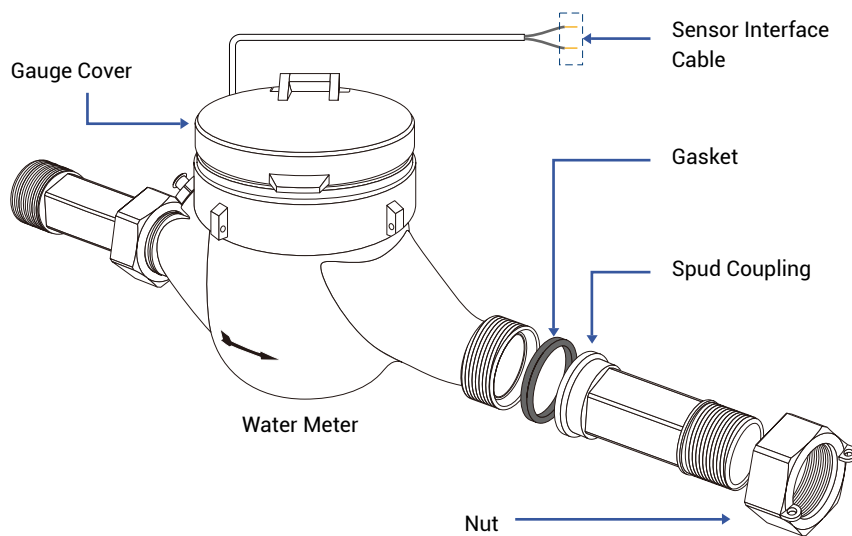


Sandpaper

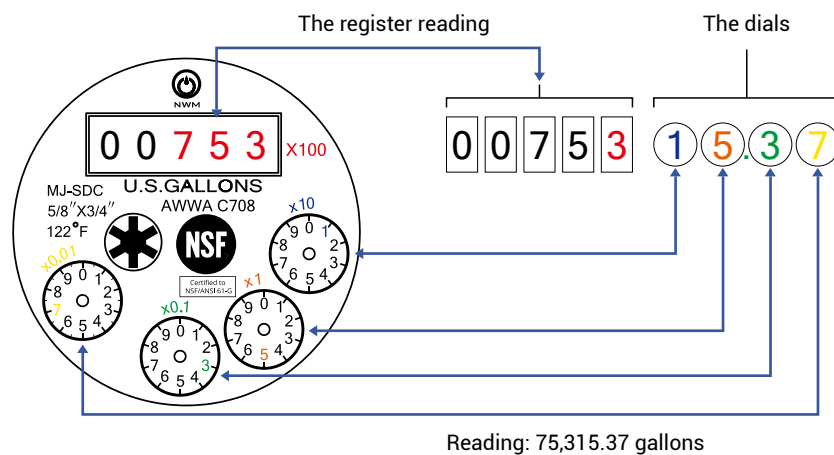


Female NPT Pipe Fitting (2)

C Get to Know Your Motorized Valve



How to read the meter gauge:

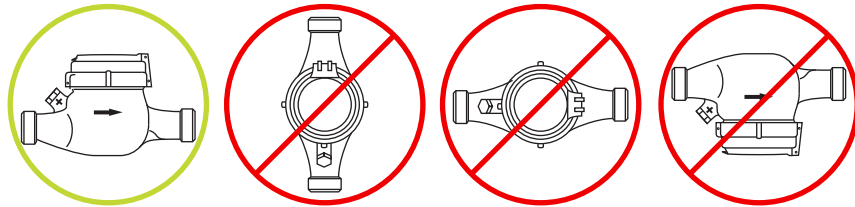




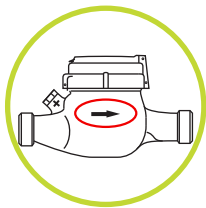
The flow meter should be installed by qualified personnel using industry best practices and in conformance with all applicable building codes. Improper installation may void the warranty, and may result in malfunction, personal injury, or property damage.

Installation Requirements

- Pressure:** The meter is not rated for systems operating at pressures above 140 PSI.
- Flushing:** Thoroughly flush the service line upstream of the meter to remove dirt and debris. For new construction projects, install a spacer pipe in the designated meter location, until the water system is thoroughly flushed.
- Fittings:** Use the supplied male NPT couplers when installing the meter. Do not attempt to connect standard NPT fittings directly to the meter body (male NPS thread).
- Shut-off Valves:** High quality, low pressure loss shut-off valves are recommended to be installed both upstream and downstream of the meter. Valves must be installed outside of minimum straight pipe distances (see "Straight Pipe Requirements")
- Clearances:** The meter should be installed in a location that is accessible for reading and service with 8" of clearance above dial and 3" on all other sides.
- Orientation:** For proper operation, the flow meter must be installed horizontally with the dial facing upwards. It cannot be installed in vertical pipe sections.



- Flow Direction:** The meter must be installed with the arrow located on the meter body pointing in the direction of water flow.

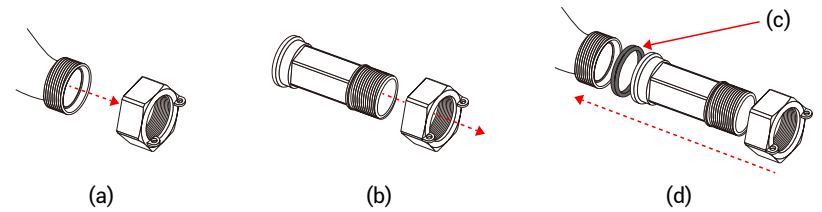


- Straight Pipe Requirements:** To maintain rated accuracy, the meter must be installed with 10x the diameter of straight pipe upstream (no bends, fittings, valves, etc.) and 5x the diameter of straight pipe downstream.

- Example:** A 3/4" meter must have 7 1/2" of straight pipe upstream and 3 3/4" downstream.

Install the water meter

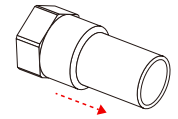
1. Identify a suitable location in the piping that satisfies all installation requirements.
2. Assemble the supplied spuds/couplings on the meter:



- a. Remove a nut from one side of the meter.
- b. Insert a coupling through the nut.
- c. Place a gasket inside the nut (on top of the coupling flange).
- d. Attach this coupling/gasket/nut assembly onto the meter, by screwing the nut onto the meter.
- e. Hand-tighten.

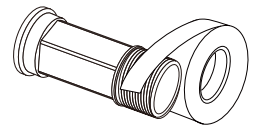
3. Loose-fit the female pipe fittings (not provided) onto the meter couplings.
4. Holding the meter against the pipe at the installation location, mark the overall length.
5. Cut the piping, using an appropriate pipe-cutting tool, per the tool manufacturer's instructions.
6. Ensure the pipe ends are clean, dry, and free of burrs. Use sandpaper, then a clean dry cloth, to smooth and clean the pipe ends.

7. Remove the female NPT fittings and permanently affix them to the piping [braze, ProPress, SharkBite, etc.] per the fittings manufacturer's instructions.



8. Remove the couplings from the meter.

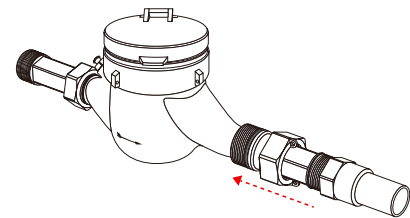
9. Apply thread sealing tape to the (male) threads of the couplings, covering a minimum of five threads.



10. Insert the couplings onto the fittings. Hand-tighten.

11. Use pipe wrenches to tighten an additional half to one full turn. ****Do not overtighten!****

12. With the dial facing up and with the arrow pointing in the flow direction, hand-tighten the coupling nuts to the meter. (The couplings have a gasket connection; do not use thread sealing tape or pipe dope on the meter's threads.)



13. Use a pipe wrench to tighten the coupling nuts and the fittings an additional quarter turn, to seal the gaskets. ****Do not overtighten!****

14. Open shut-off valves, to allow water to flow.

15. Observe all connections, to ensure they are properly sealed, with no leaks.

Refer to the quick start guide or user guide included with the YoLink sensor or controller, to complete the installation and setup of your new water meter.